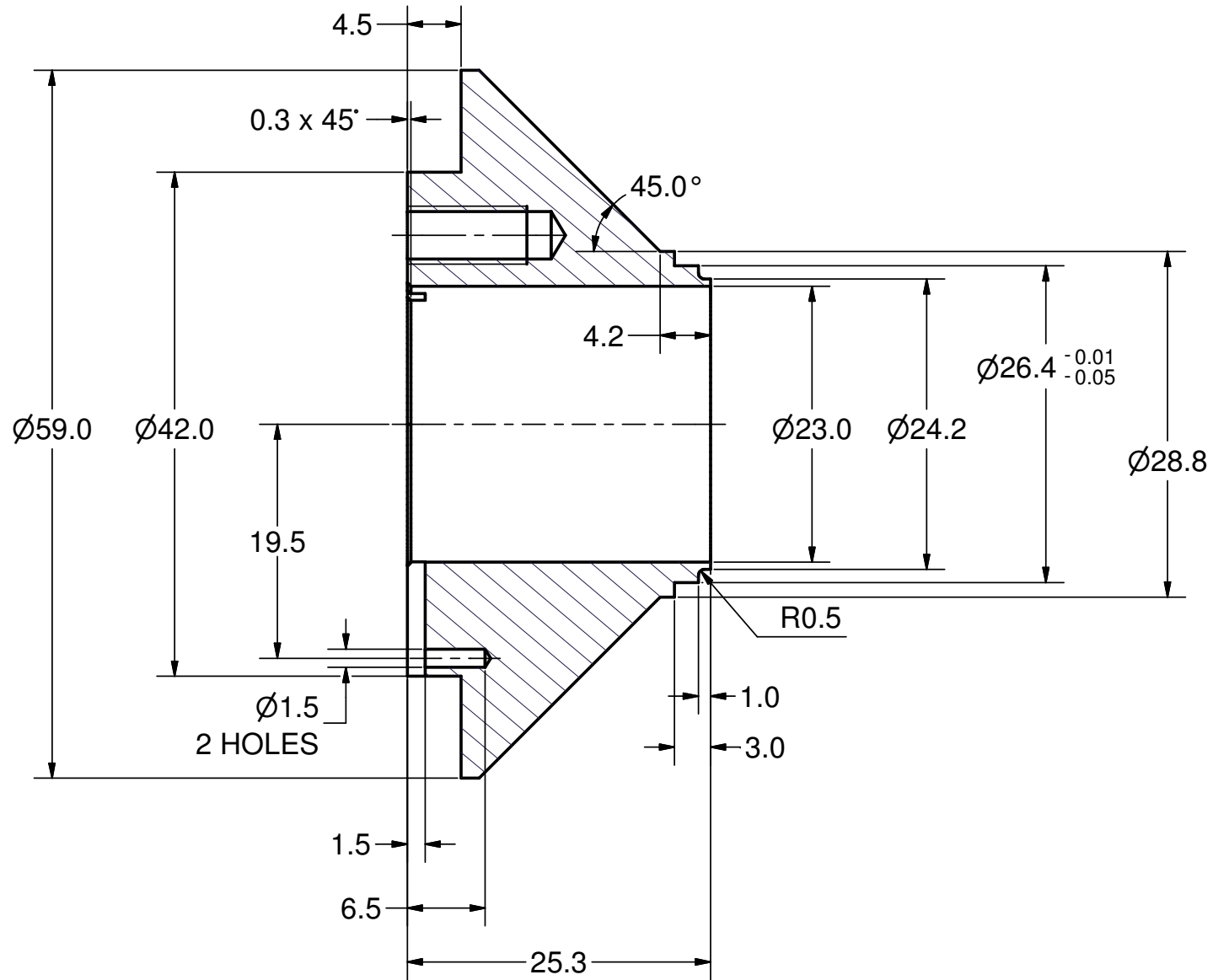


(1 : 1)



A-A

Issued all design changes as Rev C (TIO) - 4/19/07 - SAB

				Rev. C	
				Scale : 2:1	mat: Stainless Steel, 316LN
				ASSEMBLY : 75 kW CW Input Coupler	
				DESIGNATION :	
				CONE FLANGE	
				100.131.001	
				1	
				A3	
State	Changes	Date	Name		